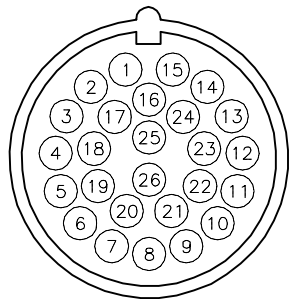
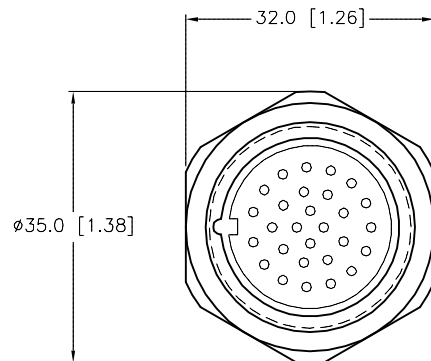


## FEMALE END VIEW

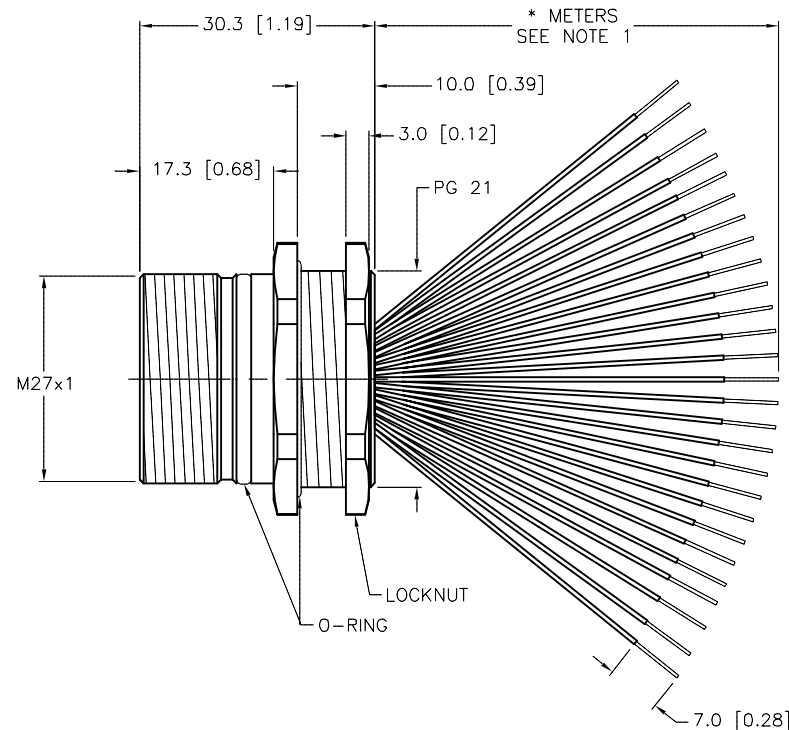


1 = BROWN	14 = WHITE
2 = WHITE/GREY	15 = BLUE
3 = BLUE/GREY	16 = BLACK/GREY
4 = BROWN/GREY	17 = BROWN/ORANGE
5 = BLACK/YELLOW	18 = WHITE/ORANGE
6 = WHITE/YELLOW	19 = BLACK/ORANGE
7 = BLUE/YELLOW	20 = BLACK/GREEN
8 = BROWN/YELLOW	21 = WHITE/GREEN
9 = BLACK/RED	22 = BLUE/GREEN
10 = WHITE/RED	23 = BROWN/GREEN
11 = BLUE/RED	24 = BLUE/ORANGE
12 = BROWN/RED	25 = GREEN/YELLOW
13 = BLACK	26 = N/C



## SPECIFICATIONS

CONTACT CARRIER MATERIAL	NYLON or PBT
CONTACT MATERIAL/PLATING	BRASS/GOLD
RECEPTACLE HOUSING MATERIAL/PLATING	BRASS/NICKEL
RATED CURRENT [A]	3.0 A
RATED VOLTAGE [V]	150 V
CONDUCTOR INSULATION MATERIAL	PVC
NUMBER OF CONDUCTORS [AWG]	25x22 AWG
TEMPERATURE	-30°C TO +80°C (-22°F TO +176°F)
PROTECTION CLASS	IEC IP67
MOUNTING	Ø28.5 [1.122] HOLE or PG 21 THRD.



SOURCE DRAWING - FOR REFERENCE ONLY

CABLE LENGTH	TOLERANCE *
ALL LENGTHS	+ 4% (OR 50mm) OF LENGTH - 0% (OR 0mm) OF LENGTH WHICHEVER IS GREATER
STRIP LENGTH	TOLERANCE *
0-7mm	±0.5mm
8-29mm	±1.0mm
30-49mm	±2.0mm
50-69mm	±3.0mm
70-100mm	±4.0mm
OVER 100mm	±5.0mm
* UNLESS OTHERWISE SPECIFIED	

## NOTES:

1."\*" INDICATES LEAD LENGTH IN METERS. CONTACT TURCK TO ORDER SPECIFIC LENGTHS.

RELATED DOCUMENTS 1. 2. 3. 4.	3RD ANGLE PROJECTION 	THIS DRAWING IS CONFIDENTIAL AND THE PROPERTY OF TURCK INC. USE OF THIS DOCUMENT WITHOUT WRITTEN PERMISSION IS PROHIBITED.		3000 CAMPUS DRIVE MINNEAPOLIS, MN 55441 1-800-544-7769 (763) 553-7300 (763) 553-0708 fax www.turck.us	
MATERIAL	SEE SPECIFICATIONS	DRFT	JB	DATE	10/13/03
FINISH	SEE SPECIFICATIONS	APVD	JB	SCALE	1=1.0
		UNIT OF MEASUREMENT <b>MILLIMETER [ INCH ]</b>		DESCRIPTION DKF 26-25-*	
		CONTACT TURCK FOR MORE INFORMATION		IDENTIFICATION NO.	
		DO NOT SCALE THIS DRAWING		REV E	
				FILE: 777002594	
				SHEET 1 OF 1	

E	UPDATE KEYWAY ORIENTATION	RDS	04/01/20	75776
REV	DESCRIPTION	BY	DATE	ECO. NO.